

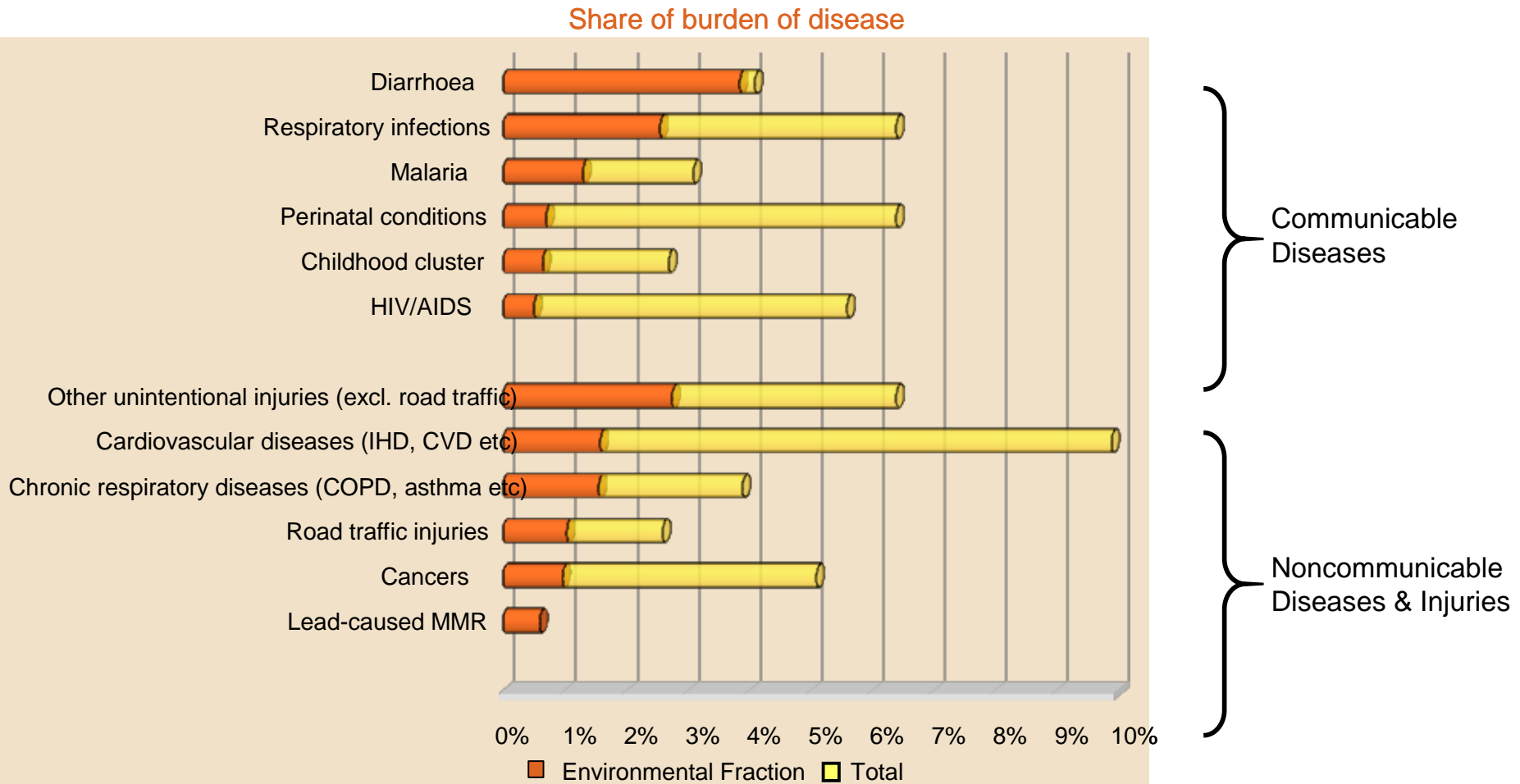
Non-Communicable Diseases and Occupational Health

Opportunities and Challenges

Dr Ivan Ivanov, Dr Evelyn Kortum
Global Occupational Health Programme
Public Health and Environment



Environmental factors cause over 25% of global burden of disease



Source: WHO Burden of Disease statistics

Global burden of disease due to occupational risks, 2004

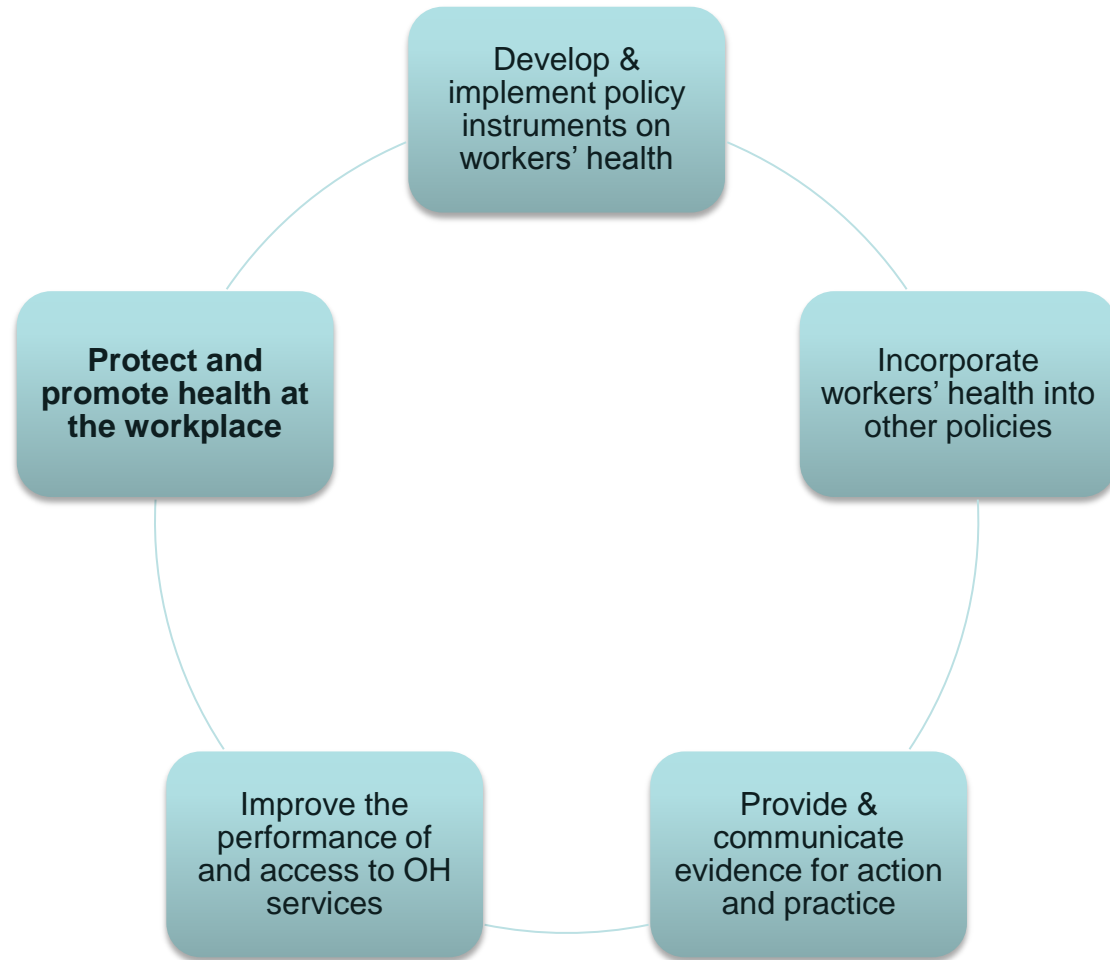
Disease	Attributable deaths	Attributable DALYs
Lung cancer	191,000	1,315,000
Leukaemia	7,000	101,000
Mesothelioma	43,000	564,000
COPD	375,000	3,804,000
Pneumoconiosis	29,000	1,061,000
Asthma	38,000	1,621,000

WHO Global plan of action on workers' health 2008-2017



Workers' health: global plan of action

SIXTIETH WORLD HEALTH ASSEMBLY



Report of the Secretary-General to the UN General Assembly, 19/05/2011

*"Part of the burden of non-communicable diseases is attributable to occupational risk factors including exposure to chemical, physical, biological, ergonomic and psychosocial hazards at work. Regulation to prevent exposure to such hazards must be implemented as necessary. Multisectoral action, including monitoring by concerned social partners, is critical to reinforce implementation of national policies on health at work."**



*Prevention and control of non-communicable diseases. Report of the Secretary-General to the UN General Assembly, 19/05/2011

UN Secretary General

On 16 September 2011 the UN General Assembly called upon the private sector



*"to promote and create an enabling environment for healthy behaviours among workers, including by establishing tobacco-free workplaces and safe and healthy working environments through occupational safety and health measures, including, where appropriate, through good corporate practices, workplace wellness programmes and health insurance plans."**

On 21 October 2011 in Rio de Janeiro 120 governments pledged

*"To strengthen occupational health safety and health protection and their oversight and encourage the public and private sectors to offer healthy working conditions so as to contribute to promoting health for all."**



*Rio Political Declaration on Social Determinants of Health, World Conference on Social Determinants of Health, Rio de Janeiro, Brazil, 19-21 October 2011

There are effective interventions for prevention and control of occupational ill-health

- Primary
 - Legislation and incentives
 - Engineering controls
 - Personal protective equipment
 - Training
- Secondary
 - Medical surveillance
 - Screening
 - Recognition of occupational diseases
- Tertiary
 - Job modification
 - Return-to-work
 - Rehabilitation

Which interventions are the most effective?
Which interventions can be delivered at the primary care level?

Effective workplace interventions in reducing non-communicable diseases.

- Ban the use of asbestos to reduce cancer
- Raise awareness and introduce more strict regulation for improving the quality of work environment
- Ban tobacco smoking at all indoor workplaces
- Provide active and safe methods of travelling to and from workplaces
- Promote physical activity at the workplace.



Cancer Control

Knowledge into Action

WHO Guide for Effective Programmes



Prevention



<http://www.who.int/cancer/modules/Prevention%20Module.pdf>



Stepwise approach to prevention of cancer

CORE	EXPANDED	DESIRABLE
<ul style="list-style-type: none">• <u>Stop using all forms of asbestos</u>• Develop regulatory standards and enforce control of the use of known carcinogens in the workplace• Avoid introducing known carcinogens into the workplace• Include occupational cancer in the national list of occupational diseases• Identify workers, workplaces, and worksites with exposure to carcinogens	<ul style="list-style-type: none">• Assess occupational cancer risks• Introduce integrated management of carcinogenic chemicals• Train workers and managers in controlling occupational carcinogens• Substitute carcinogens with less hazardous substances	<ul style="list-style-type: none">• Develop programmes for cancer prevention and control in the workplace• Organize registries of occupational exposures to carcinogens and exposed workers• Conduct assessments for carcinogenic risk of industrial and agricultural chemicals• Estimate the national occupational burden of disease from carcinogens

Every year at least 107,000 people die from asbestos-related diseases

- Annual deaths attributable to asbestos
 - at least 107,000 from lung cancer, mesothelioma and asbestosis due to occupational exposure (2010 estimates)
 - Additionally at least several thousands deaths can be attributed to other asbestos-related cancers and to non-occupational exposure
- Asbestos is the single most important occupational carcinogen causing one third of all estimated deaths from occupational cancer

WHO recommendations for elimination of asbestos-related diseases

- Elimination of the exposure
 - Recognize that stopping the use of asbestos is the most effective preventive measure
 - Provide information about safer substitutes
 - Develop economic and technological mechanisms to stimulate substitution
- Asbestos abatement
 - Avoid exposure during asbestos removal
 - Develop regulatory and workplace control measures for asbestos abatement
- Medical surveillance
 - Improve early diagnosis, treatment, rehabilitation and compensation of asbestos-related diseases
 - establish registries of people with current and past exposures

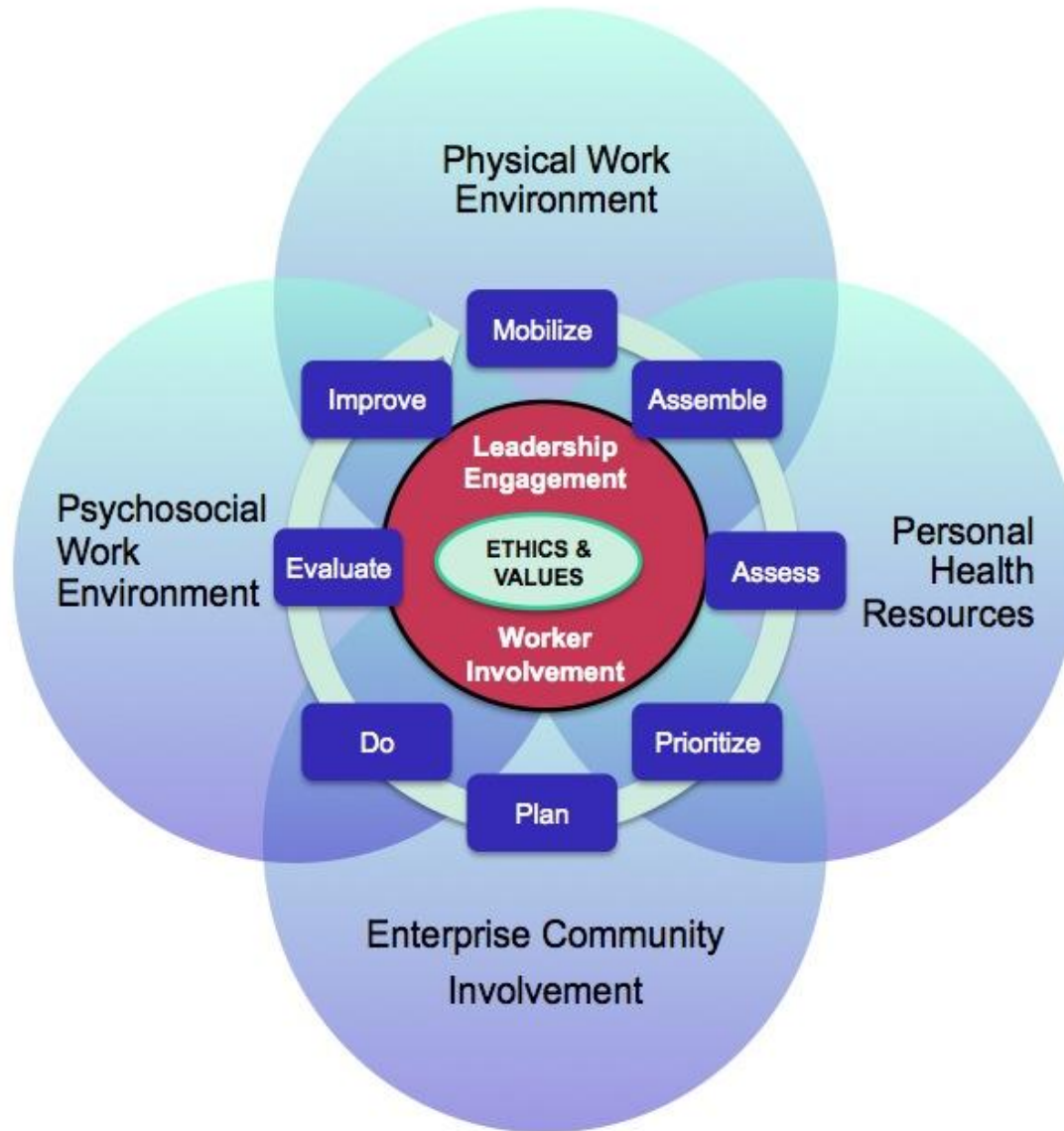




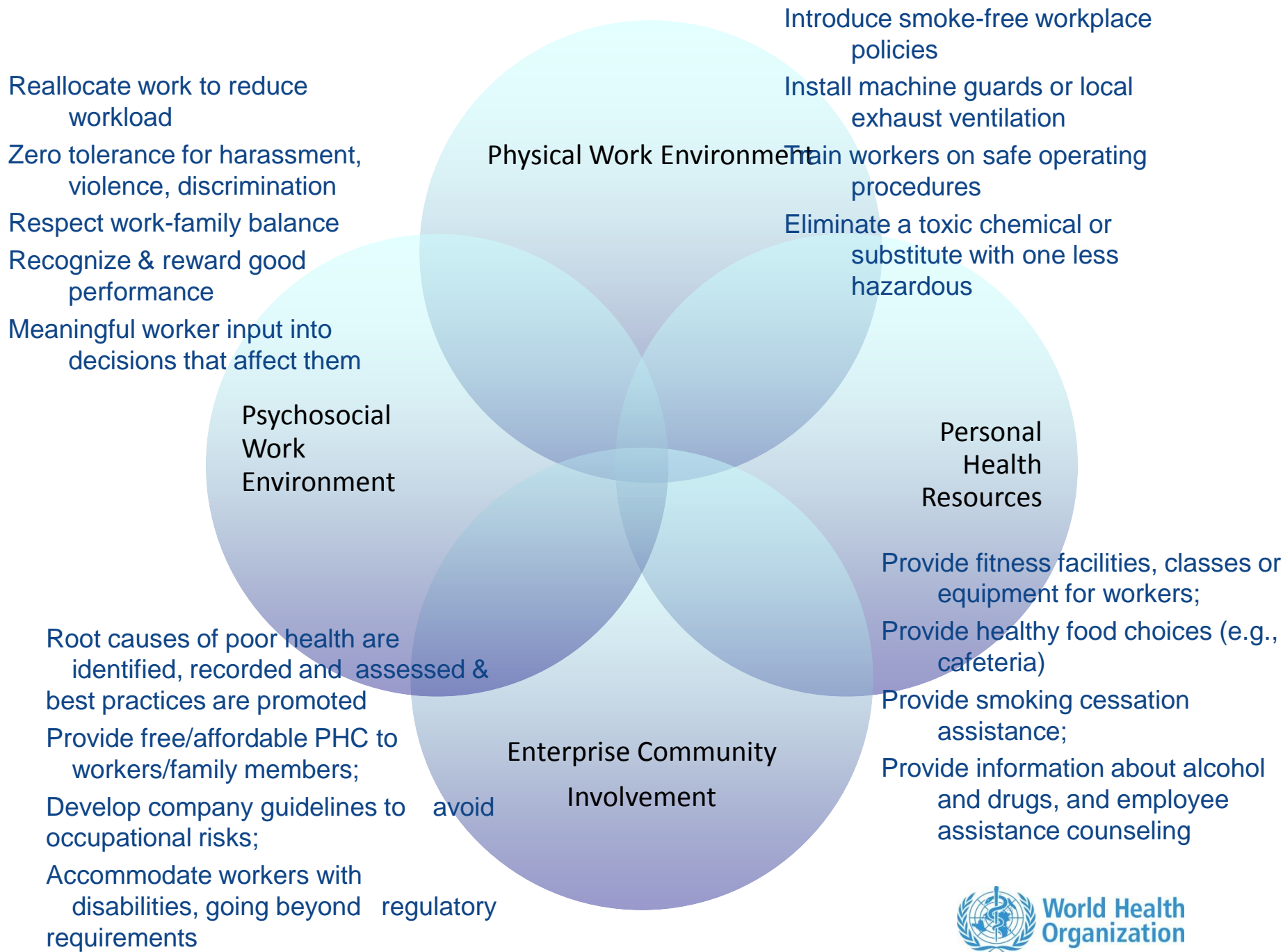
INTERNATIONAL CONFERENCE ON
**Environmental and Occupational
Determinants of Cancer:**
Interventions for Primary Prevention
ASTURIAS (AVILÉS AND GIJÓN), SPAIN

1. Prevention of the environmental and occupational exposures that cause cancer must be an integral component of cancer control worldwide. Such prevention will require strong collaboration across sectors - the health, environment, labour, trade and financial sectors and among countries, and also with civil society and the media.
2. WHO to develop a global framework for control of environmental and occupational causes of cancer that concentrates on occupational and environmental causes of cancer identified by IARC as proven or probable carcinogens.
3. WHO to lead development of measurable indicators of exposure and disease to guide cancer surveillance in countries around the world.
4. All countries to adopt and enforce legislation for protection of populations, especially the most vulnerable populations, against environmental and occupational cancers.
5. All countries to develop communication campaigns that educate populations about environmental and occupational causes of cancer and about preventive strategies.
6. Corporations to comply with all rules and regulations for prevention of environmental and occupational cancers and to use the same protective measures in all countries, developed and developing, in which they operate.
7. Research to discover still unrecognized environmental and occupational causes of cancers so as to guide future prevention.

WHO Global Framework of Healthy Workplaces



http://www.who.int/occupational_health/publications/healthy_workplaces_model.pdf



Dollar exchange rate easing credit strains
MARKET JITTERS spending power commodities
mutual fund CREDIT CRUNCH
endorse stimulus package CAPITAL INVESTMENT
slow revival

Financial crisis

dollar weakens STOCK MARKET
Downturn Inflation
slump confidence wobbles
Economic disaster
Stocks tumble
anxiety deepens
survival in danger
risk

World News

Nuclear catastrophe!

